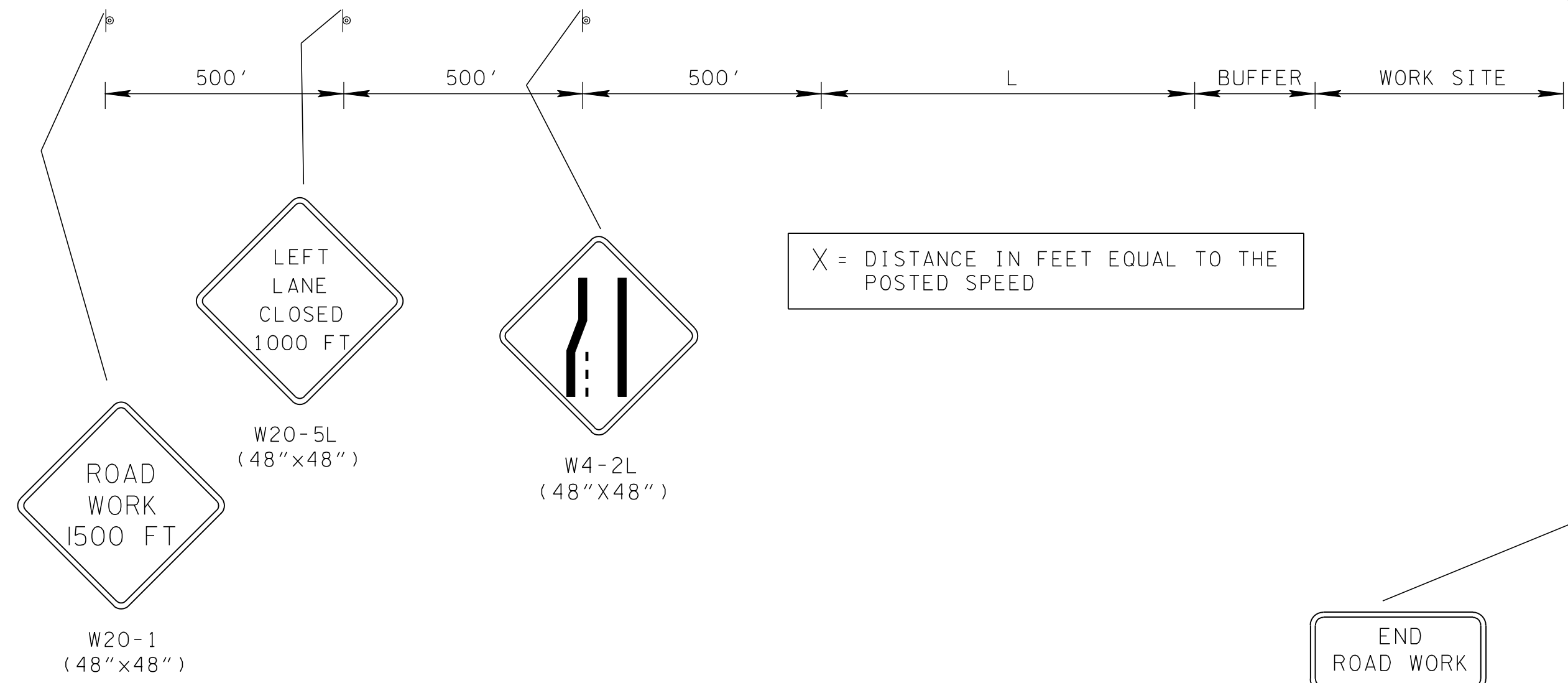


- REV. 9-1-05: REMOVED TYPE "C" WARNING LIGHTS FROM FLEXIBLE DRUMS IN TAPER. REMOVED TYPE "C" WARNING LIGHT NOTE FROM GENERAL NOTES.
- REV. 4-15-99: ADDED GENERAL NOTE (E).
- REV. 4-15-04: CHANGED W4-2 SIGN. CHANGED GENERAL NOTES (B) AND (C) TO COMPLY WITH 2003 MUTCD.



| COMPUTATION FOR DISTANCE L | |
|---------------------------------------------------------------------|--|
| L = W X S (FOR POSTED SPEEDS OF 45 MPH OR GREATER) | |
| L = $\frac{W \times S^2}{60}$ (FOR POSTED SPEEDS OF 40 MPH OR LESS) | |
| L = TAPER LENGTH IN FEET | |
| W = WIDTH OF OFFSET IN FEET | |
| S = POSTED SPEED | |

- | | |
|---------------------------------------------------------------------------|---------|
| <input type="checkbox"/> MINOR REVISION -- FHWA APPROVAL NOT REQUIRED. | |
| STATE OF TENNESSEE DEPARTMENT OF TRANSPORTATION | |
| LEFT LANE CLOSURES AT NEAR SIDE OF INTERSECTIONS | |
| 5-27-98 | T-WZ-41 |